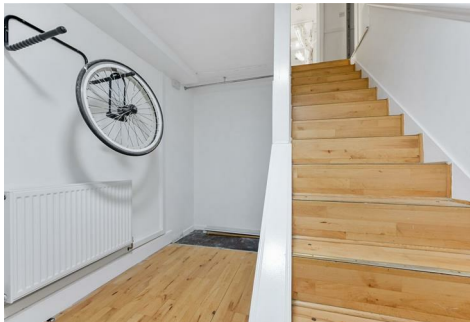


MATTHEW JAMES

Residential Sales • Lettings • Management



263 Weedington Road, London, NW5 4PR

£3,300 Per Month

A recently decorated top floor purpose built apartment with large lounge, kitchen breakfast room, three double bedrooms and a huge private terrace.

The property offers great space within easy access to Parliament Hill Fields, Chalk Farm and Gospel Oak.

A great opportunity to secure this bright and spacious home.

Top Floor

Large Lounge



Bedroom Two



Bedroom Three



Kitchen Breakfast Room



Bathroom



Bedroom One



Shower Room



Large Terrace



Additional Information

Available January 2026

EPC Rating C

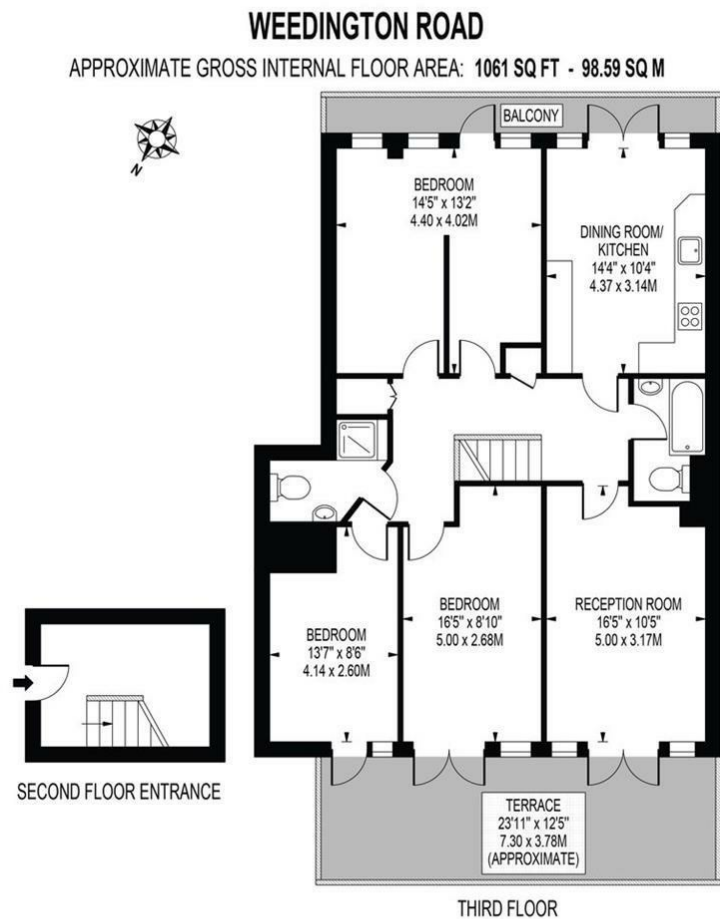
Camden Council Tax D

Long Term Tenants sought

Holding deposit of 1 weeks rent required

Full deposit of 5 weeks rent required

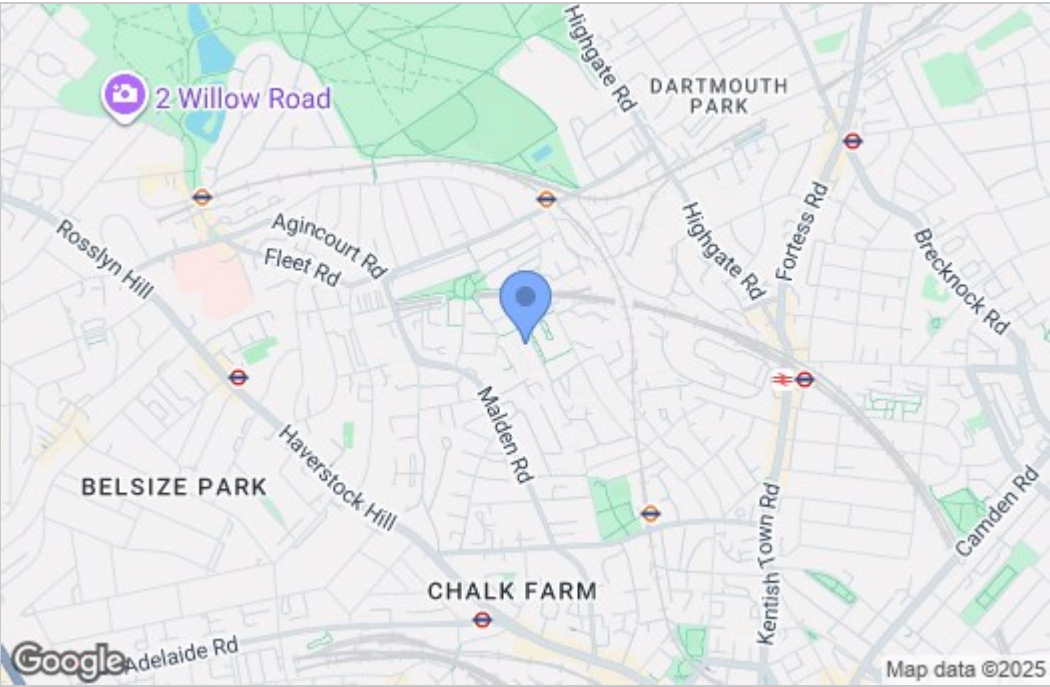
Floor Plan



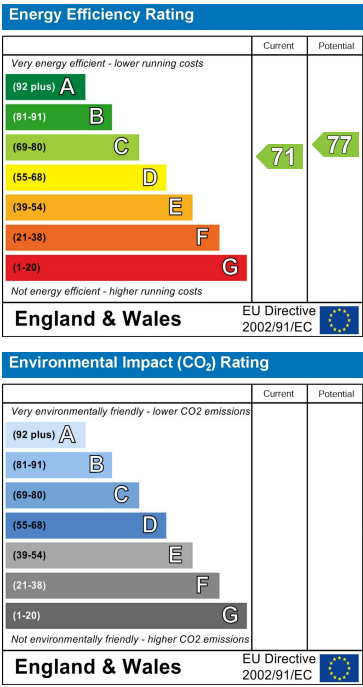
FOR ILLUSTRATION PURPOSES ONLY

THIS FLOOR PLAN SHOULD BE USED AS A GENERAL OUTLINE FOR GUIDANCE ONLY AND DOES NOT CONSTITUTE IN WHOLE OR IN PART AN OFFER OR CONTRACT. ANY INTENDING PURCHASER OR LESSEE SHOULD SATISFY THEMSELVES BY INSPECTION, SEARCHES, ENQUIRIES AND FULL SURVEY AS TO THE CORRECTNESS OF EACH STATEMENT. ANY AREAS, MEASUREMENTS OR DISTANCES QUOTED ARE APPROXIMATE AND SHOULD NOT BE USED TO VALUE A PROPERTY OR BE THE BASIS OF ANY SALE OR LET.

Area Map



Energy Efficiency Graph



These particulars, whilst believed to be accurate are set out as a general outline only for guidance and do not constitute any part of an offer or contract. Intending purchasers should not rely on them as statements of representation of fact, but must satisfy themselves by inspection or otherwise as to their accuracy. No person in this firm's employment has the authority to make or give any representation or warranty in respect of the property.